



**CLINICAL  
DIAGNOSTICS**

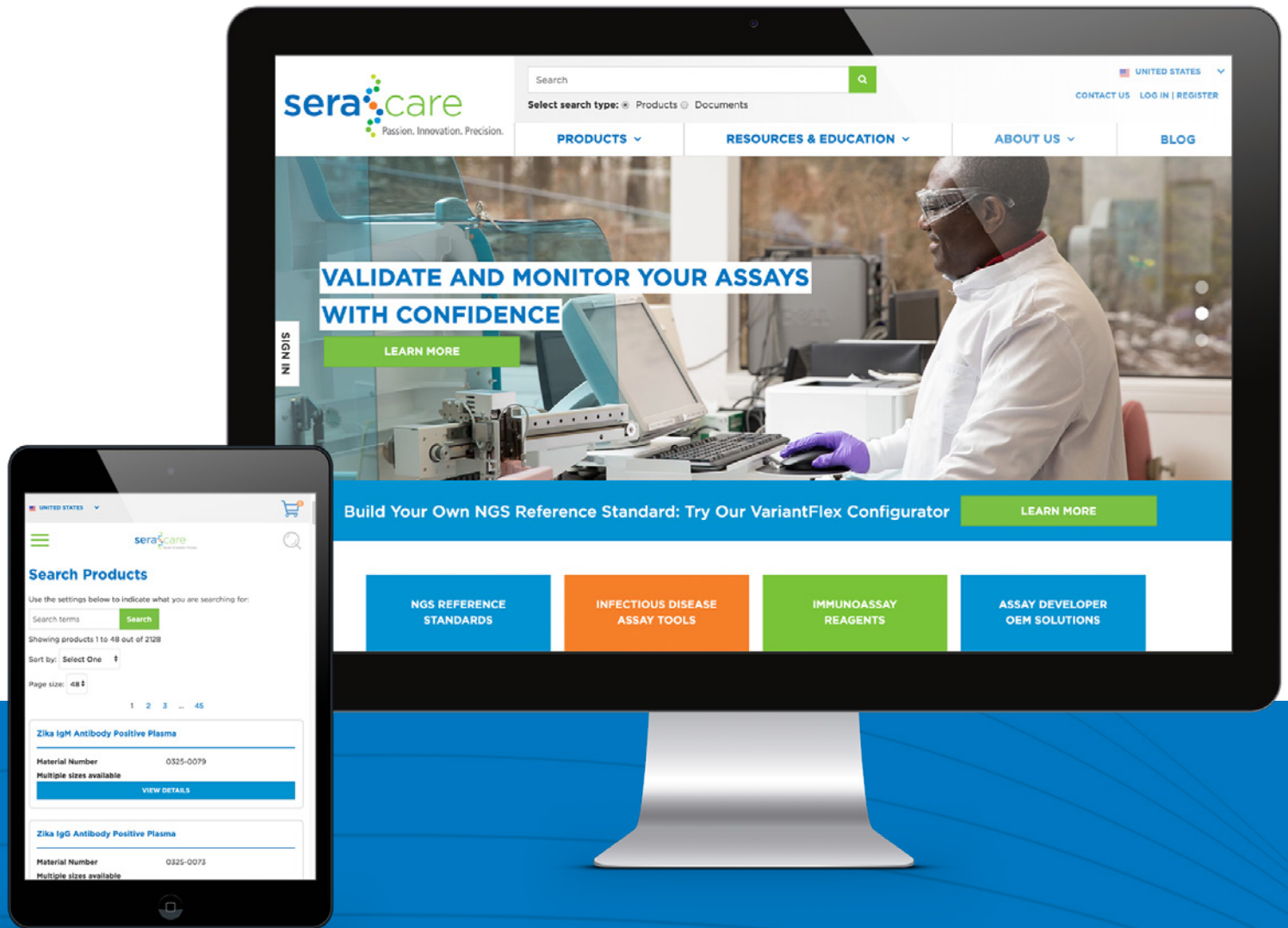
# **KPL IMMUNOASSAY REAGENTS**

Innovation in Protein Detection



**Trusted Partner and Global Supplier of Solutions to Diagnostics,  
Clinical Research and Life Science Industries for over 30 years**







# HOW TO ORDER



ORDER ONLINE  
**seracare.com**



ORDER BY PHONE  
**508.244.6400 • 800.676.1881** Toll Free



ORDER BY FAX  
**508.634.3334**



ORDER BY EMAIL  
**customerservice@lgcgroup.com**

## EXPERT TECHNICAL SUPPORT

Monday – Friday  
8:30am – 5:00pm (EST)

Phone: **508.244.6400**  
Toll free US: **800.676.1881**  
email: **cdx-technicalsupport@lgcgroup.com**

For more information about products listed in this catalog or to speak with your sales representative, contact us at [cdx-customerservice@lgcgroup.com](mailto:cdx-customerservice@lgcgroup.com) or 508.244.6400.

# KPL IMMUNOASSAY REAGENTS

## AN INNOVATOR IN PROTEIN DETECTION

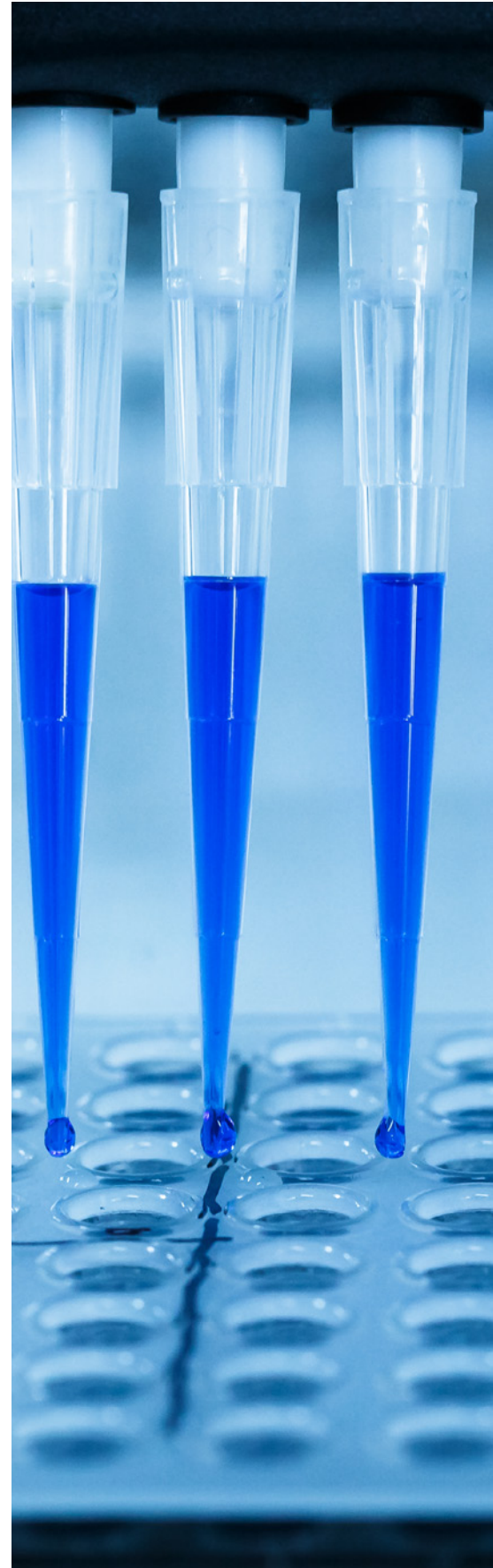
As the first to commercialize antigen affinity-purified antibodies and a pioneer in ready-to-use ELISA substrates, SeraCare's KPL line has been at the forefront of protein detection technology from the beginning. This innovation, paired with exceptional performance and consistent quality, is why customers keep coming back to SeraCare's KPL immunoassay reagents.

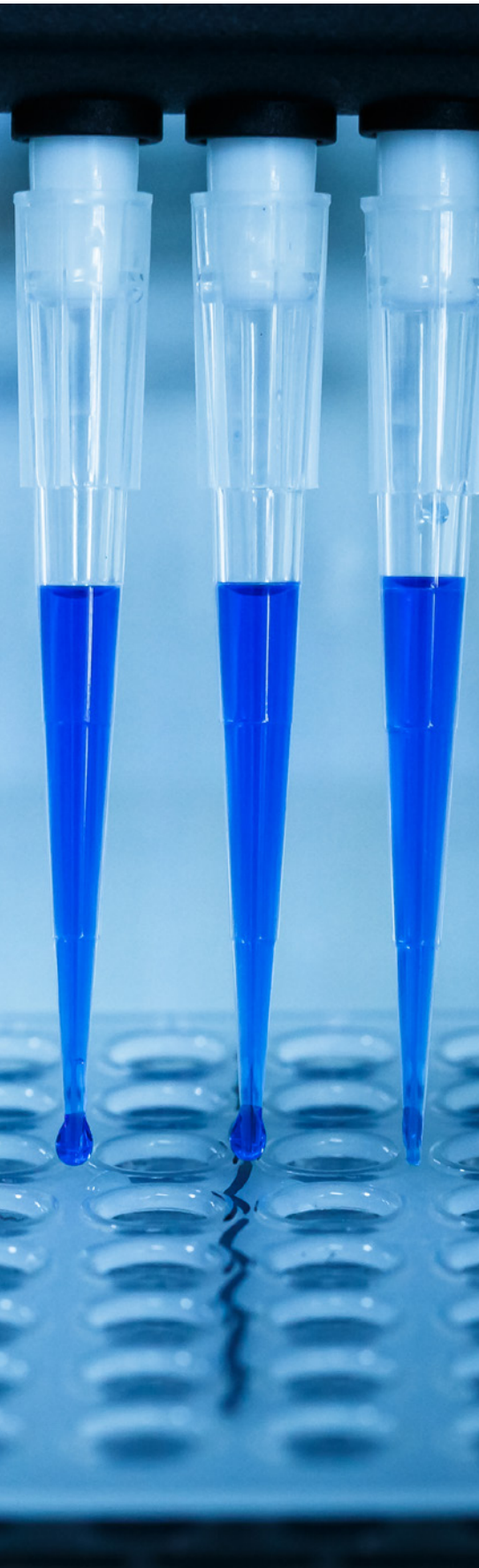
## PROTEIN DETECTION WITH MORE SIGNAL, LESS NOISE

An extensive menu of immunoassay reagents, substrates, and antibodies means SeraCare caters to the unique needs of a broad spectrum of users. Whether developing diagnostic assays or conducting clinical research, SeraCare's KPL line of products provide high performance, high signal-to-noise ratio, and high purity to enhance assay sensitivity and specificity.

## QUALITY AND RELIABILITY, LOT AFTER LOT

Exceptional performance is built on high quality products. With such a large selection of immunoassay products and a range of pricing, SeraCare has an offering to fit most budgets. SeraCare has been a trusted supplier of reagents for commercially available human and animal assays and research for over four decades. Our commitment to strict quality standards allows for consistent performance lot after lot.





## WHY CHOOSE SERACARE KPL IMMUNOASSAY REAGENTS?



### UNSURPASSED EXPERIENCE

We bring over three decades of experience to our products.



### LEADING PERFORMANCE

Our antigen affinity-purification processes yield pure antibodies with high signal-to-noise, defined specificity, and lot-to-lot consistency.



### BROAD OFFERING

SeraCare offers a comprehensive portfolio of more than 600 immunoassay products including colorimetric and chemiluminescent reagents, stable liquid substrates for peroxidase and phosphatase detection, blocks, washes, buffers, and stopping reagents. In addition, you can select from over 500 antibodies to immunoglobulins of twenty animal species labeled with eighteen tags, as well as our innovative BacTrace® line. Power your ELISA, blotting, and immunohistochemistry applications with KPL brand products.



### HIGHEST QUALITY

All products are produced under an ISO 13485:2016 quality system. We utilize APHIS (Animal and Plant Health Inspection Service) and USDA-approved animal facilities.



### IN STOCK

We maintain >98% availability for same-day shipment.



### TECHNICAL SUPPORT

Our team of scientists support your project from start to finish. Let us assist you in selecting technologies and reagents that will enhance your research and shorten your development cycle and time to market. Tailor-made, custom, and bulk quantity solutions are also available. Contact our experts today!

# ELISA

## PIONEER IN ELISA

SeraCare has been a pioneer and leading provider of ELISA reagents since offering one of the first ready-to-use ELISA substrates in the early 1980s. SeraCare was also first to offer antigen affinity-purified antibodies. We provide a wide selection of KPL substrates, antibodies, conjugates and kits to accommodate all levels of detection sensitivity.

## ELIMINATE ASSAY VARIABILITY

Reagent reproducibility and stability are key to ELISA development in order to eliminate assay variability. Introducing new lots of material over time should not affect your assay performance. We understand that. Knowing SeraCare manufactures ELISA reagents in our ISO 13485-certified facility gives you confidence that your reagents maintain high performance and consistency from lot to lot.

## SUBSTRATES

One of the most critical decisions when it comes to successful ELISA or Western design is selection of a substrate with sufficient sensitivity in tandem with low background. Substrates can be divided into two broad categories based on the type of detection method. Chemiluminescent detection tends to provide the highest sensitivity and fewer steps while colorimetric detection tends to have better stability and is more economical. SeraCare offers a variety of options for both detection methods to meet your specific needs. Our extensive substrate offering is shown in **Table 1: Substrate Selection Guide**. Refer to pages 27 - 29 for ordering details.

**Table 1:**  
Substrate  
Selection Guide

ELISA/ WESTERN	SUBSTRATE	ENZYME	SENSITIVITY	STABILITY	FORMAT	STOP SOLUTION
E	KPL SureBlue Reserve TMB	HRP	● ● ● ● ●	● ● ● ● ●	Ready-to-use	KPL TMB Stop KPL TMB BlueSTOP
E	KPL TMB 2-C	HRP	● ● ● ● ●	● ● ● ● ●	2-component	KPL TMB Stop KPL TMB BlueSTOP
E	KPL SureBlue TMB	HRP	● ● ● ● ●	● ● ● ● ●	Ready-to-use	KPL TMB Stop KPL TMB BlueSTOP
E	KPL BluePhos	AP	● ● ● ● ●	● ● ● ● ●	2-component	KPL APStop
E	KPL ABTS 1-C	HRP	● ● ● ● ●	● ● ● ● ●	Ready-to-use	KPL HRP Stop
E	KPL ABTS 2-C	HRP	● ● ● ● ●	● ● ● ● ●	2-component	KPL HRP Stop
W	KPL TMB Membrane	HRP	● ● ● ● ●	● ● ● ● ●	Ready-to-use	N/A
W	KPL 4CN	HRP	● ● ● ● ●	● ● ● ● ●	2-component	N/A
W	KPL BCIP/NBT	AP	● ● ● ● ●	● ● ● ● ●	Ready-to-use	N/A
E, W	KPL LumiGLO	HRP	● ● ● ● ●	● ● ● ● ●	2-component	N/A
E, W	KPL PhosphaGLO	AP	● ● ● ● ●	● ● ● ● ●	Ready-to-use	N/A
E, W	KPL PhosphaGLO Reserve	AP	● ● ● ● ●	● ● ● ● ●	Ready-to-use	N/A
E, W	KPL LumiGLO Reserve	HRP	● ● ● ● ●	● ● ● ● ●	2-component	N/A

Colorimetric Chemiluminescent

## ANTIBODIES

SeraCare also offers a wide selection of secondary antibodies as well as a unique set of primary antibodies for infectious disease and food pathology targets. See pages 7 - 9 for more detail.

## SUPPORT REAGENTS

In addition to primary and secondary antibodies, SeraCare offers a range of support reagents including blocking, coating, wash and stop solutions, providing everything needed for your ELISA assay. We also offer "all-inclusive" reagent kits for added convenience. You only need to provide the primary antibody and target antigen. See pages 12 - 13 for more detail.

## HOW TO CHOOSE THE RIGHT ELISA SUBSTRATE

Which ELISA substrate is best for your assay will vary depending on several factors. Consider these criteria to help choose:

### **SENSITIVITY:**

Select a substrate that will work at or slightly below the limits of detection required in your assay. This will reduce optimization efforts. The more sensitive a substrate, the more non-specific binding you will have to optimize out.

### **EASE-OF-USE:**

Various substrates require different preparations to yield a working substrate solution. Ready-to-use substrates are easier to use and better suited for automated equipment.

### **STABILITY:**

Ready-to-use substrates tend to be less stable than substrates requiring some preparation. Evaluate how quickly you will use the substrate to ensure it is stable through its entire use life.

### **EQUIPMENT:**

Your ELISA assay's detection method will determine which type of substrate to use. Chemiluminescent detection requires a luminometer, while colorimetric detection only requires a plate spectrophotometer. Your equipment will impact the level of assay sensitivity achievable.

### **PRICE:**

More sensitive and ready-to-use substrates tend to cost more, but there are options available for any budget.

## WESTERN BLOTTING

### **MEMBRANE-BASED IMMUNODETECTION**

Western blotting is a membrane-based immunodetection technique for proteins. The advantage of western blotting is its ability to confirm target proteins with the additional dimension of molecular weight, thus distinguishing the target from other proteins.

### **COLORIMETRIC, CHEMILUMINESCENT, & FLUORESCENT DETECTION OPTIONS**

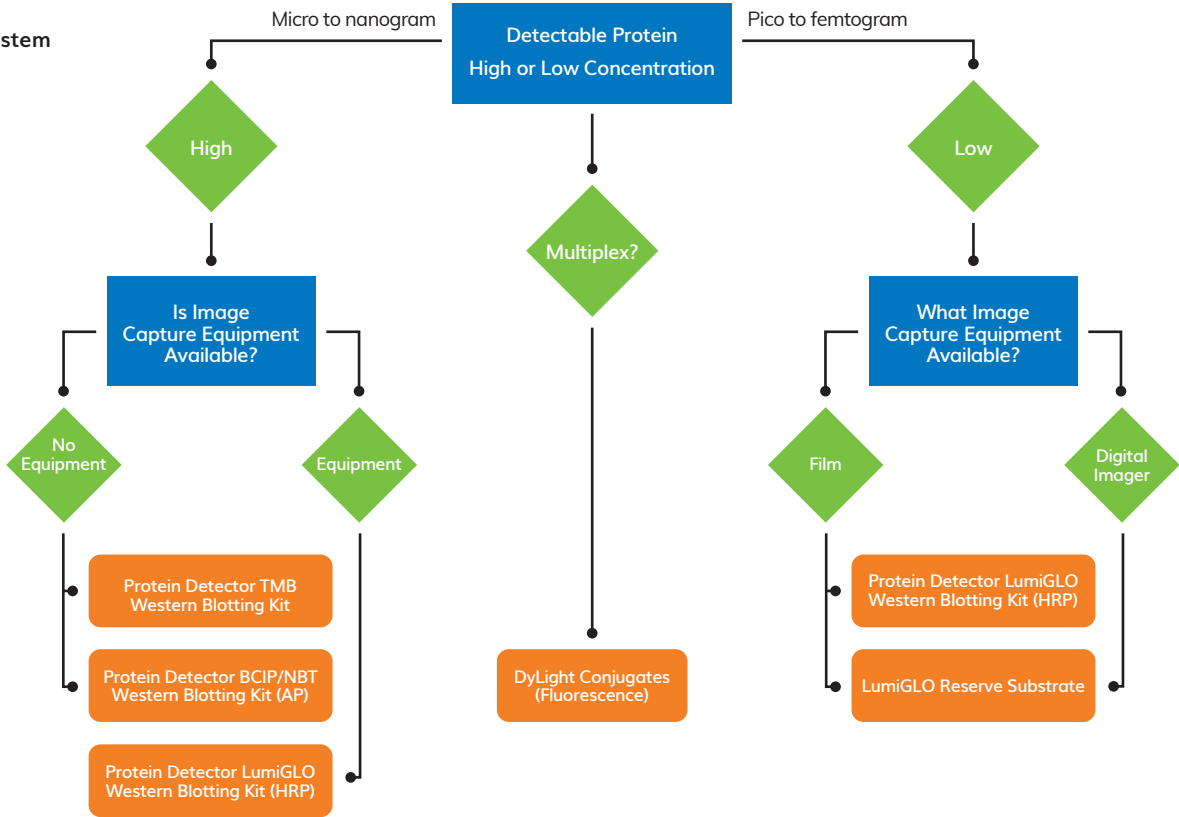
Similar to ELISA, western blotting leverages colorimetric and chemiluminescent detection. While chemiluminescent detection tends to provide higher sensitivity and fewer steps, colorimetric detection tends to have better stability and is more economical. Fluorescent detection, a useful third option for western blotting, offers similar sensitivity to chemiluminescent detection with the added ability to multiplex probes so more than one target can be detected in the same reaction, improving potential throughput. To determine which detection method is best for your western blotting needs please refer to **Figure 1: Detection System Selection Guide** first, followed by **Table 2** to see our kit offering.

### **WESTERN BLOTTING SUPPORT REAGENTS**

SeraCare carries a broad range of support reagents for western blotting as well as individual kit components. Refer to **Table 1** for western blotting substrate selection. For western blotting blockers, wash solutions and buffers that reduce background and improve reproducibility, refer to pages 31 - 32 for ordering details.



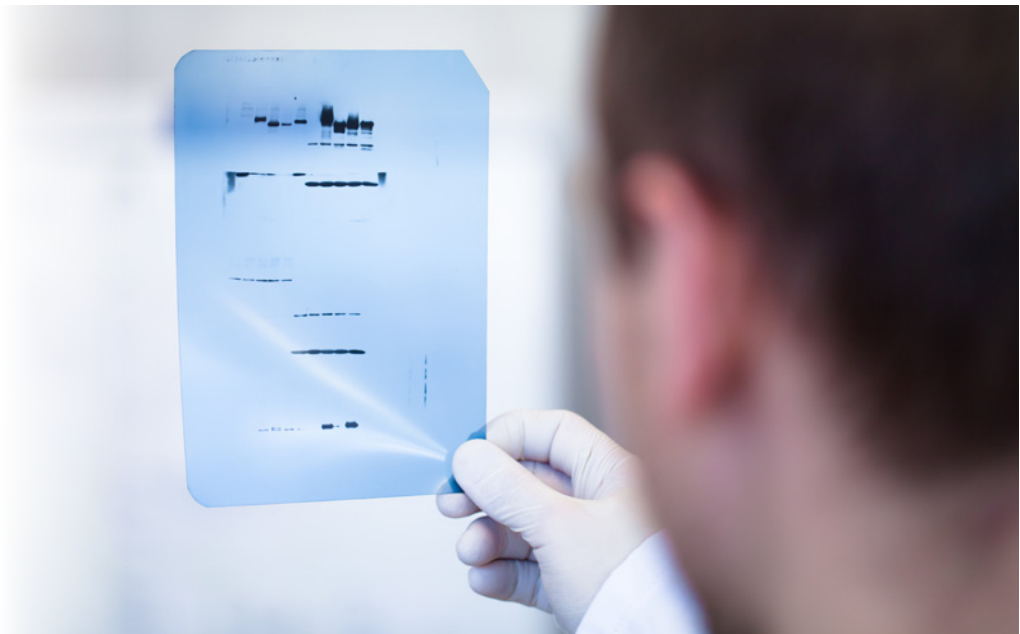
**Figure 1:**  
What Detection System  
Should I Use?



**Table 2:**  
Western  
Blotting Kit

WESTERN BLOTTING KITS	ENZYME	DETECTION SENSITIVITY	STABILITY	SUBSTRATE FORMAT
KPL Protein Detector LumiGLO Western Blotting Kit	HRP	Low Picogram	● ● ●	2-Component
KPL Protein Detector TMB Western Blotting Kit	HRP	Picogram	● ● ● ●	Ready-to-use
KPL Protein Detector BCIP/NBT Western Blotting Kit	AP	High Picogram	● ● ●	Ready-to-use

For ordering details please refer to pages 27 - 28.





## A. ANTI-HEAVY CHAIN SPECIFIC ANTIBODIES

Anti-heavy chain specific antibodies, IgG, IgM, IgA, and IgE, react specifically with the heavy chain indicated in the product name. Reactivity with other immunoglobulin classes is minimized through affinity chromatography. Heavy chain specific antibodies are adsorbed against the whole antibody molecule of other immunoglobulin classes to remove shared heavy and light chain reactivity. Anti-heavy chain specific antibodies are useful for quantitation of the exact heavy chain class of antibody in samples containing other immunoglobulins and proteins such as serum or tissue culture media. Anti-heavy chain antibodies are also used to improve sensitivity and specificity of serological assays.

## B. ANTI-HEAVY AND LIGHT CHAIN (H+L) ANTIBODIES

Antibodies to IgG heavy and light chain (H+L) recognize epitopes on both heavy and light chains of IgG and may react with other immunoglobulin classes that have light chains in common with IgG. The anti-IgG (H+L) antibodies are tested for reactivity to IgG. The extent to which they react with other immunoglobulin classes is not tested and may vary from one lot to another. Antibodies to IgG (H+L) are widely used for detecting IgG in serological immunoassays where broad immunoglobulin reactivity is desirable.

# SECONDARY ANTIBODIES AND CONJUGATES

SeraCare offers a wide selection of secondary antibodies against 20 different animal species and a variety of different immunoglobulins. Our polyclonal antibodies are obtained from the serum of goats or rabbits immunized with a particular antigen. The antiserum is affinity-purified to remove non-specific antibodies, increasing sensitivity and reducing background.

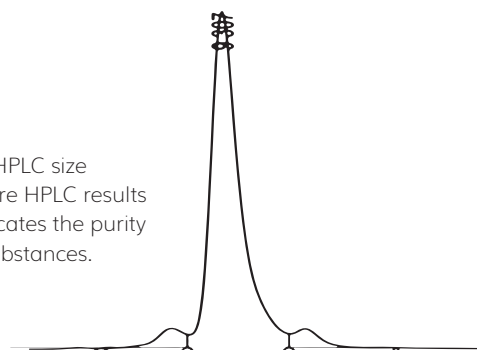
Knowing important details about our antibodies will help you understand and select the right antibody that meets your assay requirements. **Table 3** and the associated descriptions below will help guide your decision. See pages 15 - 26 for ordering details.

**Table 3: Secondary Antibody Selection Guide**

TARGET IG CLASSES OFFERED	RECOMMENDED FOR	DESCRIPTION
IgA (α)	Targeting IgA	A
IgE (ε)	Targeting IgE	A
IgG (γ)	Targeting IgG	A
IgM (μ)	Targeting IgM	A
IgG (H+L)	Good choice when broad immunoglobulin reactivity is desired	B
IgG+IgM (H+L), HSE	Even broader reactivity than IgG (H+L)	C
IgA+IgG+IgM (H+L)	Broadest Immunoglobulin detection	D
IgG (Fc)	Targets the Fc region of IgG	E
F(ab') <sub>2</sub> Fragments	Applications where non-specific binding via Fc receptors may be an issue	E

**Figure 2: Purity**

We monitor the purity of our antibodies using HPLC size exclusion prior to affinity purification. Shown are HPLC results for anti-mouse IgG — one significant peak indicates the purity of the protein and the lack of contaminating substances.



**Figure 3: Sensitivity and Specificity**

Shown are western blots comparing SeraCare's KPL Anti-Mouse IgG (H+L), Human Serum Adsorbed and Peroxidase-Labeld (material # 5450-0011) with leading competitors under identical assay conditions. The KPL antibody demonstrates stronger signal and higher signal-to-noise.

### C. ANTI-IGG+IGM (H+L) ANTIBODIES

Antibody products directed against IgG and IgM (H+L) contain an equal mixture of two antibodies that recognize reactive sites specific for IgG and IgM. Every product lot is tested for reactivity to IgG and IgM. The level of reactivity that may occur to other immunoglobulin classes through shared light chain activity is not tested. HSA indicates that the product has been cross-adsorbed with human serum to reduce cross-reactivity to human immunoglobulin. These products are recommended for use in assays where reproducible detection of both IgG and IgM is desired.

### D. ANTI-IGA+IGG+IGM (H+L) ANTIBODIES

Antibodies directed against IgA+IgG+IgM (H+L) contain an equal mixture of three antibodies that recognize reactive sites specific to IgA, IgM, and IgG. Other shared sites through light chain cross-reactivity may also be present. Every product lot is tested for reactivity to each of these three immunoglobulin classes. These products are best used when measurement of all three classes of antibodies needs to be controlled in an immunoassay.

### E. F(AB')<sub>2</sub> AND FC FRAGMENT AFFINITY PURIFIED ANTIBODIES

F(ab')<sub>2</sub> fragment antibodies are specifically developed to enhance signal in assays where the presence of an Fc receptor on cells can nonspecifically bind to whole antibody molecules. F(ab')<sub>2</sub> antibodies can also be used to reduce background in assays which involve bacterial contamination, and to increase sensitivity in immunohistochemical applications where smaller antibody molecules are needed to diffuse through tissues. For IgG(Fc), a polyclonal secondary antibody has been raised to the Fc region of IgG.

## CONJUGATES

SeraCare offers antibodies that come conjugated with a variety of labels for use in a range of detection techniques. We also offer protein labeling kits for instances when a pre-existing labeled conjugate is not available (see *Supporting Reagents and Kits* section, pages 12 - 13 for more information). Custom labeling performed by the SeraCare R&D team is also an available option. Table 4 illustrates the variety of labels that can be conjugated to SeraCare antibodies and recommendations on conjugate use. Refer to pages 15 - 26 for conjugate ordering details.

**Table 4: Choosing the Right Conjugate**

LABEL	EX/EM*	MAIN FEATURE/BENEFITS
HRP	N/A	Most popular enzyme due to high sensitivity and large selection of appropriate substrates
AP	N/A	Longevity of signal; many substrates available
Reserve AP	N/A	Greater sensitivity than traditional AP conjugates
Biotin	N/A	Low background; allows for enhanced sensitivity when paired with labeled streptavidin
DyLight 488	493/518	Green; high sensitivity, low background, and enhanced photostability
FITC	495/528	Green; easily visualized
R-PE	546/575	Red; brighter and offers greater photostability than traditional fluorophores
Cy3	550/570	Yellow; brighter and offers greater photostability than traditional fluorophores
TRITC	555/580	Red; good for multiplexing
Cy5	650/670	Red; brighter and offers greater photostability than traditional fluorophores
DyLight 680	682/715	Near infrared; high sensitivity, low background, and enhanced photostability
DyLight 800	770/794	Infrared; high sensitivity, low background, and enhanced photostability

\*Excitation and emission spectra in nanometers

ELISA, Western blotting, IHC

IHC, flow cytometry, Western blotting, microarrays and fluorophore-linked immunosorbent assays

**SERACARE PIONEERED THE  
COMMERCIALIZATION OF ANTIGEN  
AFFINITY-PURIFIED ANTIBODIES**

# BacTrace® PRIMARY ANTIBODIES AND CONTROLS

## KPL BACTRACE ANTIBODIES

SeraCare's portfolio of KPL BacTrace anti-bacteria antibodies has helped researchers understand and diagnose food pathology and infectious disease for more than 30 years. Refer to page 26 - 27 for BacTrace antibody ordering details.

## HIGH SENSITIVITY AND SPECIFICITY

Our polyclonal antibodies recognize a variety of target bacterial antigens, thus greatly amplifying the signal and providing maximum detection. And our proprietary affinity purification method ensures high specificity, resulting in fewer false-positives.

## GUARANTEED PERFORMANCE AND LOT-TO-LOT CONSISTENCY

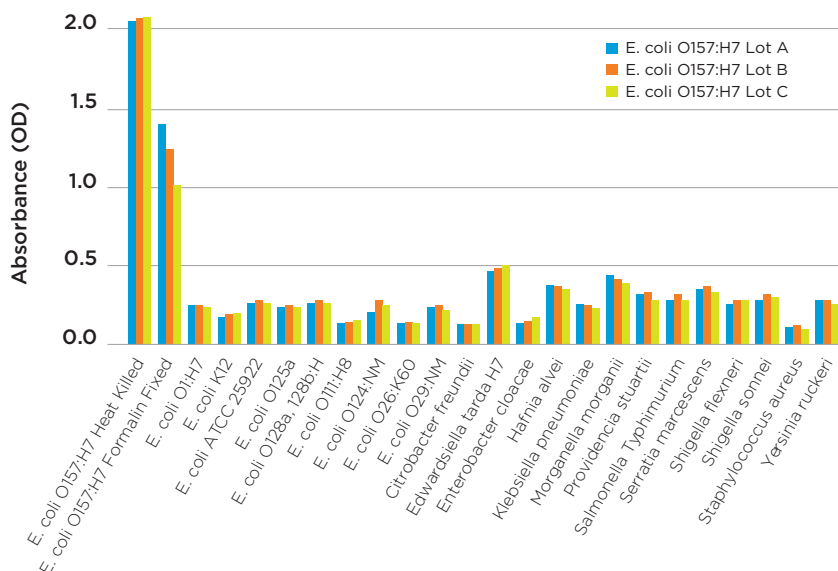
KPL BacTrace antibodies are manufactured in-house so we can control production from raw materials through delivery to your laboratory. Extensive in-house quality control release testing ensures reproducibility between lots, accelerating your optimization efforts. See Figure 4.

Table 5:  
BacTrace Antibody  
Selection Guide

BacTrace Antibodies to Food-borne Pathogens	AVAILABLE LABELS							
	Unlabeled	Magnetic Beads	Latex Beads	Phosphatase	Biotin	ReserveAP	Fluorescein	Positive Control Available*
Camylobacter	●			●				●
E. coli O157:H7	●	●	●	●				●
E. coli O157:H7 Molecular Grade	●							●
E. coli O111	●	●	●	●			●	●
E. coli O26	●	●	●	●			●	●
E. coli O103	●	●	●	●			●	●
E. coli O145	●	●	●	●			●	●
E. coli O121	●	●	●	●			●	●
E. coli O45	●	●	●	●			●	●
E. coli O104	●	●						●
E. coli O91	●	●						●
Listeria species	●			●			●	●
Listeria species High Sensitivity	●	●		●	●	●		●
Salmonella Common Structural Antigen (CSA-1)	●	●	●	●		●		●
Salmonella Common Structural Antigen (CSA-1) Molecular Grade	●							●
Salmonella CSA+	●							●
Shigella	●						●	●
Vibrio species	●			●			●	●
Vibrio cholera	●							●
BacTrace Antibodies to Infectious Disease Agents								
Helicobacter pylori	●							●
Yersinia species	●			●			●	●
Borrelia burgdorferi	●		●			●		●
Borrelia species	●							●
Legionella species	●							●
Other BacTrace Antibodies								
Renibacterium salmoninarum	●		●			●		●
Clavibacter michiganensis	●							●

\*Positive controls are derived from heat killed bacteria

Figure 4: Reproducibility of BacTrace Anti-E. coli O157:H7 Antibody



# IMMUNOHISTOCHEMISTRY

## TISSUE-BASED IMMUNODETECTION

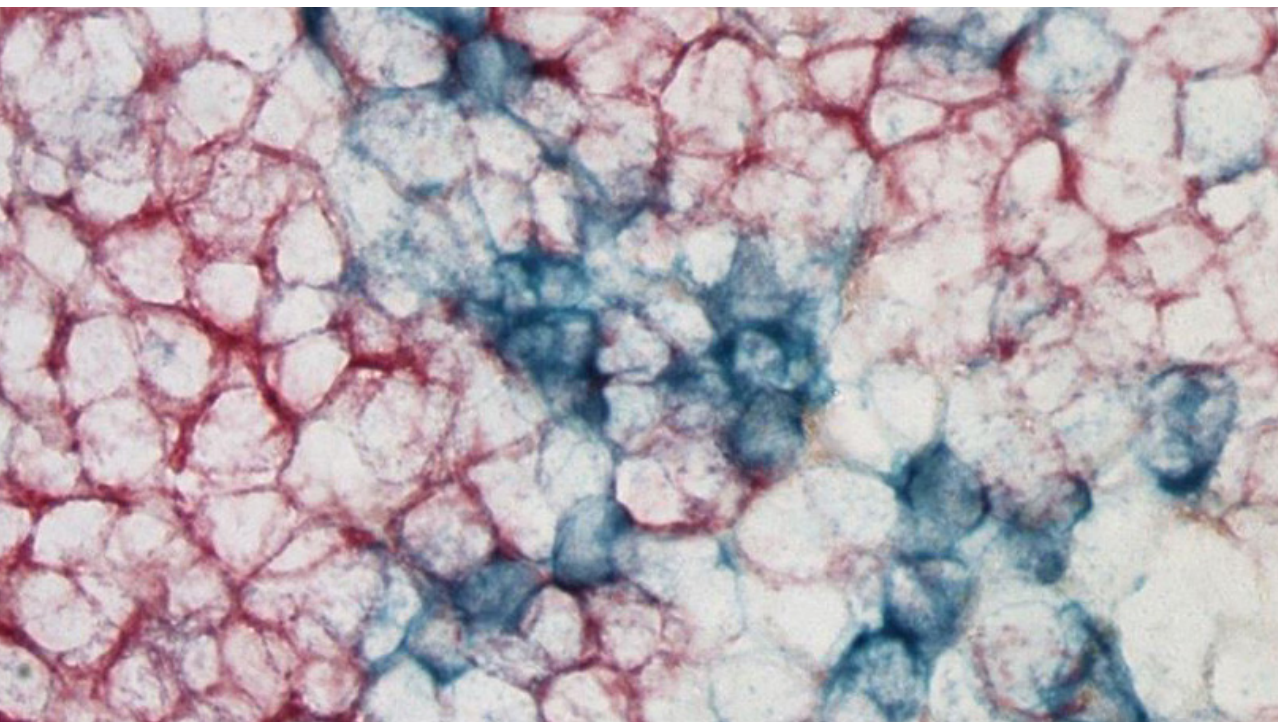
Immunohistochemistry (IHC) is immunostaining applied to tissue sections. The process allows visualization of cell morphology within the tissue section along with target antigens and their distribution within the cell or tissue. SeraCare's line of kits and reagents include some of the most sensitive immunochemistry substrates available.

## COLORIMETRIC OR FLUORESCENT DETECTION

Colorimetric staining involves an enzyme conjugated to an antibody. In the presence of substrate, an intensely colored product deposits directly on the antigen location and can be seen under a light microscope. Alternatively, with fluorescent staining, the antibody is tagged with a fluorophore, such as Cy dyes or DyLight dyes, which can be directly detected under a fluorescence microscope. Which method to choose will depend on the abundance of the target antigen, desired ease-of-use, and equipment access (fluorescent or light microscope). Whether utilizing colorimetric or fluorescent methods, SeraCare has a range of products that facilitate accurate and sensitive staining.

## KPL TRUEBLUE™ — SUPER SENSITIVE SUBSTRATE FOR PLAQUE ASSAYS AND IMMUNOHISTOCHEMISTRY

Recommended for detection of low abundance markers using HRP conjugates and suitable for viral plaque assays, KPL TrueBlue provides 50 times greater sensitivity than traditional DAB (3,3'-diaminobenzidine) preparations. Improved 3,3',5,5'-tetramethylbenzidine (TMB) and  $H_2O_2$  chemistry enables stable, permanent blue color in a single step. The reagents are non-carcinogenic and insoluble in alcohols and xylene. KPL TrueBlue provides excellent contrast with DAB in double-labeling or counter stain experiments.



KPL TrueBlue staining of epithelial membrane antigen, counterstained with KPL Contrast Red.



## KPL HISTOMARK IMMUNOHISTOCHEMICAL STAINING SYSTEMS

SeraCare offers standalone substrates and a line of staining systems for the detection of peroxidase, phosphatase, and  $\beta$ -galactosidase-labeled conjugates. Visualization is based on enzymatic conversion of colorimetric substrates into a stable precipitate that provides a permanent record. These kits offer a variety of contrasting colors for multiple staining applications. See **Table 6** for a comparison of substrate staining systems. *Refer to pages 29 - 30 for ordering details.*

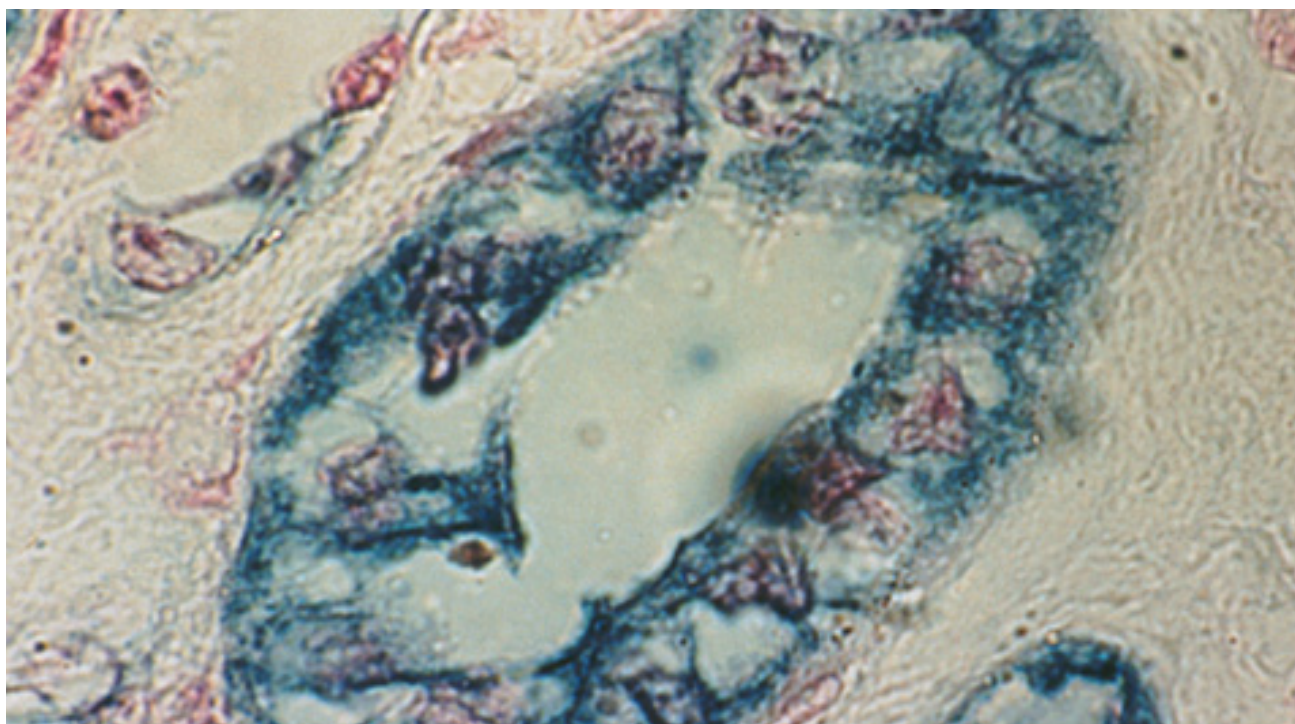
## COUNTERSTAINS

SeraCare's selection of counterstains enables visualization of cell nuclei and interpretation of tissue morphology. They provide sharp contrast with the principal stain and improve nuclear detail. Several counterstains can be used with multiple substrates. *Refer to page 30 for ordering details.*

**Table 6: Substrate Staining System Selection Guide**

SUBSTRATE STAINING SYSTEM	ENZYME	FORMAT	COLOR	KEY FEATURES
HistoMark TrueBlue	HRP	Ready-to-use	Blue	50 - 100 times more sensitive than DAB; non-carcinogenic
DAB Reagent Set	HRP	3-component liquid	Brown	Can be made electron-dense
HistoMark BLACK	HRP	3-component liquid	Black	Enhanced DAB provides high sensitivity
HistoMark ORANGE	HRP	3-component liquid	Red-Orange	Enhanced DAB provides high sensitivity
HistoMark X-Gal	$\beta$ -Gal	2-component liquid	Aqua	No need to block endogenous HRP and AP enzyme

KPL TrueBlue demonstrates epithelial membrane antigen in kidney.



## SUPPORTING REAGENTS AND KITS

SeraCare provides a broad range of reagents, buffers, and accessories to power the most demanding immunoassays. Save time and improve sensitivity by using standardized reagents from a reliable source. Our support reagents are formulated to ensure accurate, reproducible results, and are manufactured with ISO 13485:2016 quality standards to provide consistent performance lot after lot. In addition to off-the-shelf formulations, most products are available in custom bulk pack sizes as well. Refer to **Table 7** for Immunoassay Supporting Reagents and Kits ordering details.

### BLOCKING SOLUTIONS

SeraCare offers a wide variety of blocking solutions for immunoassay experiments. Our product range extends from proprietary high-sensitivity, non-animal origin, protein-free blocking solutions in our SignalLOCK™ line to more traditional nonfat dried milk or BSA. All are ideal solutions for optimizing immunoassay detection limits. *For offering and order detail refer to pages 31 - 32.*

### WASH SOLUTIONS AND BUFFERS

Convenient concentrates for most immunoassay applications; help reduce non-specific binding and maintaining immunoassay integrity. Save time and maintain consistency with a variety of preformulated concentrates. Different buffer chemistries allow for compatibility in many different immunoassay formats. Both Tris and phosphate-buffered options are available, including: Dulbecco's PBS, PBST, TBS, TBST, and Tris-Glycine. *For offering and order detail refer to pages 31 - 32.*

### ELISA SUBSTRATE STOP SOLUTIONS

Designed for use with KPL colorimetric substrates, stop solutions allow for a consistent stop point to your ELISA assays. Stop solutions enable more consistent results from plate to plate and many may be used for high-throughput experiments. Refer to **Table 1: Substrate Selection Guide**, for recommended Stop Solutions and *page 29 for ordering details.*



**Table 7: Supporting Reagents and Kits Guide**

SUPPORTING KITS & REAGENTS	PURPOSE	REFER TO PAGE
Blocking Solutions	Blocks remaining surface preventing non-specific binding from occurring	31
Wash Solutions	Washes away non-specific binding from the surface after non-specific binding has occurred	31
Buffers	Eliminates the need for time- consuming reagent preparation	31
Conjugate Stabilizers	Stops enzyme substrates at a specific point in color development for consistent ELISA results	31
ELISA Substrate Stop Solutions	Stabilizes enzyme conjugates in solution	29
Protein A and G Purification Kits	Kits that contain everything needed to purify antibodies	31
Recombinant Protein Detection/Analysis	Conjugates and kits to detect his-tagged recombinant proteins	31
Protein Labeling Kits and Reagents	Label proteins with enzymes, biotin or fluorescein	33









## PRODUCT LISTINGS

SECONDARY ANTIBODIES AND CONJUGATES		
MATERIAL #	PRODUCT DESCRIPTION	PACKAGING
5210-0213	Anti-APC Antibody	1 Vial x 1.0 mg
5220-0301	Anti-APC, HRP-labeled Antibody	1 Vial x 0.1 mg
5220-0325	Anti-APC, ReserveAP-labeled Antibody	1 Vial x 0.1 mg
5210-0168	Anti-Bovine IgM (Q) Antibody	1 Vial x 1.0 mg
5210-0169	Anti-Bovine IgG (H+L) Antibody	1 Vial x 1.0 mg
5220-0280	Anti-Bovine IgM (mu) Antibody, Peroxidase labeled	1 Vial x 0.1 mg
5220-0361	Anti-Bovine IgG (H+L) Antibody, Peroxidase labeled	1 Vial x 0.5 mg
5230-0293	Anti-Bovine IgG (H+L) Antibody, FITC labeled	1 Vial x 0.5 mg
5210-0197	Anti-Cat IgM (mu) Antibody	1 Vial x 1.0 mg
5210-0198	Anti-Cat IgG (H+L) Antibody	1 Vial x 1.0 mg
5220-0315	Anti-Cat IgG (gamma) Antibody, Phosphatase labeled	1 Vial x 0.1 mg
5220-0291	Anti-Cat IgG (gamma) Antibody, Peroxidase labeled	1 Vial x 0.1 mg
5220-0292	Anti-Cat IgM (mu) Antibody, Peroxidase labeled	1 Vial x 0.1 mg
5220-0369	Anti-Cat IgG (H+L) Antibody, Peroxidase labeled	1 Vial x 0.5 mg
5230-0315	Anti-Cat IgG (gamma) Antibody, FITC labeled	1 Vial x 0.5 mg
5230-0316	Anti-Cat IgM (mu) Antibody, FITC labeled	1 Vial x 0.5 mg
5230-0317	Anti-Cat IgG (H+L) Antibody, FITC labeled	1 Vial x 0.5 mg
5210-0205	Anti-Chicken IgG (H+L) Antibody	1 Vial x 1.0 mg
5220-0373	Anti-Chicken IgG (H+L) Antibody, Peroxidase labeled	1 Vial x 0.5 mg
5230-0325	Anti-Chicken IgG (H+L) Antibody, FITC labeled	1 Vial x 0.5 mg
5210-0209	Anti-Deer IgG (H+L) Antibody	1 Vial x 1.0 mg
5220-0298	Anti-Deer IgG (H+L) Antibody, Peroxidase labeled	1 Vial x 0.1 mg
5230-0329	Anti-Deer IgG (H+L) Antibody, FITC labeled	1 Vial x 0.5 mg
5210-0193	Anti-Dog IgG (gamma) Antibody	1 Vial x 1.0 mg
5210-0194	Anti-Dog IgM (mu) Antibody	1 Vial x 1.0 mg
5210-0195	Anti-Dog IgG (H+L) Antibody	1 Vial x 1.0 mg
5220-0289	Anti-Dog IgG (gamma) Antibody, Peroxidase labeled	1 Vial x 0.1 mg
5220-0290	Anti-Dog IgM (mu) Antibody, Peroxidase labeled	1 Vial x 0.1 mg
5220-0314	Anti-Dog IgM (mu) Antibody, Phosphatase labeled	1 Vial x 0.1 mg
5220-0368	Anti-Dog IgG (H+L) Antibody, Peroxidase labeled	1 Vial x 0.5 mg
5230-0312	Anti-Dog IgG (gamma) Antibody, FITC labeled	1 Vial x 0.5 mg
5230-0313	Anti-Dog IgM (mu) Antibody, FITC labeled	1 Vial x 0.5 mg
5230-0314	Anti-Dog IgG (H+L) Antibody, FITC labeled	1 Vial x 0.5 mg
5210-0206	Anti-Duck IgG (H+L) Antibody	1 Vial x 1.0 mg
5220-0296	Anti-Duck IgG (H+L) Antibody, Peroxidase labeled	1 Vial x 0.1 mg
5230-0326	Anti-Duck IgG (H+L) Antibody, FITC labeled	1 Vial x 0.5 mg

## SECONDARY ANTIBODIES AND CONJUGATES

MATERIAL #	PRODUCT DESCRIPTION	PACKAGING
5210-0211	Anti-FITC Antibody	1 Vial x 1.0 mg
5220-0299	Anti-FITC, HRP-labeled Antibody	1 Vial x 0.1 mg
5220-0323	Anti-FITC, ReserveAP-labeled Antibody	1 Vial x 0.1 mg
5210-0170	Anti-Goat IgG (H+L) Antibody	1 Vial x 1.0 mg
5220-0362	Anti-Goat IgG (H+L) Antibody, Peroxidase labeled	1 Vial x 0.5 mg
5230-0294	Anti-Goat IgG (H+L) Antibody, FITC labeled	1 Vial x 0.5 mg
5210-0181	Anti-Guinea Pig IgG (H+L) Antibody	1 Vial x 1.0 mg
5220-0366	Anti-Guinea Pig IgG (H+L) Antibody, Peroxidase labeled	1 Vial x 0.5 mg
5220-0378	Anti-Guinea Pig IgG (H+L) Antibody, Phosphatase labeled	1 Vial x 0.5 mg
5230-0303	Anti-Guinea Pig IgG (H+L) Antibody, FITC labeled	1 Vial x 0.5 mg
5220-0371	Anti-Hamster IgG (H+L) Antibody, Peroxidase labeled	1 Vial x 0.5 mg
5220-0293	Anti-Horse IgG (gamma) Antibody, Peroxidase labeled	1 Vial x 0.1 mg
5210-0199	Anti-Horse IgG (gamma) Antibody	1 Vial x 1.0 mg
5210-0200	Anti-Horse IgM (mu) Antibody	1 Vial x 1.0 mg
5210-0201	Anti-Horse IgG (H+L) Antibody	1 Vial x 1.0 mg
5220-0317	Anti-Horse IgM (mu) Antibody, Phosphatase labeled	1 Vial x 0.1 mg
5220-0294	Anti-Horse IgM (mu) Antibody, Peroxidase labeled	1 Vial x 0.1 mg
5220-0316	Anti-Horse IgG (gamma) Antibody, Phosphatase labeled	1 Vial x 0.1 mg
5220-0370	Anti-Horse IgG (H+L) Antibody, Peroxidase labeled	1 Vial x 0.5 mg
5220-0380	Anti-Horse IgG (H+L) Antibody, Phosphatase labeled	1 Vial x 0.5 mg
5230-0320	Anti-Horse IgG (H+L) Antibody, FITC labeled	1 Vial x 0.5 mg
5210-0154	Anti-Human IgA (alpha) Antibody	1 Vial x 1.0 mg
5210-0155	Anti-Human IgG (gamma) Antibody	1 Vial x 1.0 mg
5210-0157	Anti-Human IgM (mu) Antibody	1 Vial x 1.0 mg
5210-0158	Anti-Human IgE (epsilon) Antibody	1 Vial x 1.0 mg
5210-0159	Anti-Human IgG (H+L) Antibody	1 Vial x 1.0 mg
5210-0160	Anti-Human IgA+IgG+IgM (H+L) Antibody	1 Vial x 1.0 mg
5210-0164	Anti-Human IgA+IgG+IgM (H+L) Antibody, Mouse Serum Adsorbed	1 Vial x 1.0 mg
5210-0165	Anti-Human IgG (Fc) Antibody	1 Vial x 1.0 mg
5210-0297	Anti-Human IgG (gamma) Antibody, F(ab') <sub>2</sub> Fragment	1 Vial x 1.0 mg
5210-0298	Anti-Human IgM (mu) Antibody, F(ab') <sub>2</sub> fragment	1 Vial x 1.0 mg
5210-0299	Anti-Human IgG (H+L) Antibody, F(ab') <sub>2</sub> fragment	1 Vial x 1.0 mg
5220-0277	Anti-Human IgG (H+L) Antibody, Peroxidase labeled	1 Vial x 0.1 mg
5220-0278	Anti-Human IgA+IgG+IgM (H+L) Antibody, Mouse Serum Adsorbed and Peroxidase labeled	1 Vial x 0.1 mg
5220-0279	Anti-Human IgG (FC) Antibody, Peroxidase labeled	1 Vial x 0.1 mg
5220-0303	Anti-Human IgG (H+L) Antibody, Phosphatase labeled	1 Vial x 0.1 mg
5220-0327	Anti-Human IgG (gamma) Antibody, Peroxidase labeled	1 Vial x 1.0 mg

## SECONDARY ANTIBODIES AND CONJUGATES

MATERIAL #	PRODUCT DESCRIPTION	PACKAGING
5220-0328	Anti-Human IgM (mu) Antibody, Peroxidase labeled	1 Vial x 1.0 mg
5220-0329	Anti-Human IgE (epsilon) Antibody, Peroxidase labeled	1 Vial x 1.0 mg
5220-0330	Anti-Human IgG (H+L) Antibody, Peroxidase labeled	1 Vial x 1.0 mg
5220-0331	Anti-Human IgA, IgG, and IgM (H+L) Antibody, Peroxidase labeled	1 Vial x 1.0 mg
5220-0360	Anti-Human IgA (alpha) Antibody, Peroxidase labeled	1 Vial x 0.5 mg
5220-0390	Anti-Human IgG (gamma) Antibody, F(ab') <sub>2</sub> fragment, Peroxidase labeled	1 Vial x 0.5 mg
5220-0391	Anti-Human IgM (mu) Antibody, F(ab') <sub>2</sub> fragment, Peroxidase labeled	1 Vial x 0.5 mg
5220-0392	Anti-Human IgG (H+L) Antibody, F(ab') <sub>2</sub> fragment, Peroxidase labeled	1 Vial x 0.5 mg
5220-0456	Anti-Human IgG (gamma) Antibody, Peroxidase labeled	1 Vial x 1.0 mL
5220-0457	Anti-Human IgM (mu) Antibody, Peroxidase labeled	1 Vial x 1.0 mL
5230-0284	Anti-Human IgA (alpha) Antibody, FITC labeled	1 Vial x 0.5 mg
5230-0285	Anti-Human IgG (gamma) Antibody, FITC labeled	1 Vial x 0.5 mg
5230-0286	Anti-Human IgM (mu) Antibody, FITC labeled	1 Vial x 0.5 mg
5230-0287	Anti-Human IgE (epsilon) Antibody, FITC labeled	1 Vial x 0.5 mg
5230-0288	Anti-Human IgG (H+L) Antibody, FITC labeled	1 Vial x 0.5 mg
5230-0289	Anti-Human IgA+IgG+IgM (H+L) Antibody, FITC labeled	1 Vial x 0.5 mg
5230-0290	Anti-Human IgA+IgG+IgM (H+L) Antibody, Mouse Serum Adsorbed and FITC labeled	1 Vial x 0.5 mg
5230-0291	Anti-Human IgG (FC) Antibody, FITC labeled	1 Vial x 0.5 mg
5230-0338	Anti-Human IgG (H+L), DyLight 488 labeled	1 Vial x 0.1 mg
5210-0182	Anti-Mouse IgA (alpha) Antibody	1 Vial x 1.0 mg
5210-0183	Anti-Mouse IgG (gamma) Antibody (Human Serum Adsorbed)	1 Vial x 1.0 mg
5210-0185	Anti-Mouse IgG (H+L) Antibody, Human Serum Adsorbed	1 Vial x 1.0 mg
5210-0187	Anti-Mouse IgA+IgG+IgM (H+L) Antibody, Human Serum Adsorbed	1 Vial x 1.0 mg
5210-0188	Anti-Mouse IgG+IgM (H+L) Antibody, Human Serum Adsorbed	1 Vial x 1.0 mg
5210-0191	Anti-Mouse IgG (H+L) Antibody, Human and Rat Serum Adsorbed	1 Vial x 1.0 mg
5210-0192	Anti-Mouse IgG (H+L) Antibody, Rabbit and Human Serum Adsorbed	1 Vial x 1.0 mg
5210-0184	Anti-Mouse IgM (mu) Antibody, Human Serum Adsorbed	1 Vial x 1.0 mg
5210-0302	Anti-Mouse IgG (gamma) antibody, F(ab') <sub>2</sub> Fragment, Human Serum Adsorbed,	1 Vial x 1.0 mg
5210-0303	Anti-Mouse IgG (H+L) antibody, F(ab') <sub>2</sub> Fragment, Human Serum Adsorbed,	1 Vial x 1.0 mg
5220-0286	Anti-Mouse IgG (H+L) Antibody, Human Serum Adsorbed and Peroxidase labeled	1 Vial x 0.1 mg
5220-0287	Anti-Mouse IgG (H+L) Antibody, Rat and Human Serum Adsorbed and Peroxidase labeled	1 Vial x 0.1 mg
5220-0288	Anti-Mouse IgG (H+L) Antibody, Rabbit and Human Serum Adsorbed and Peroxidase labeled	1 Vial x 0.1 mg
5220-0338	Anti-Mouse IgG (H+L), Extra Serum Adsorbed, Peroxidase-labeled	1 Vial x 1.0 mg
5220-0339	Anti-Mouse IgG (gamma) Antibody, Human Serum Adsorbed and Peroxidase labeled	1 Vial x 1.0 mg
5220-0340	Anti-Mouse IgM (mu) Antibody, Human Serum Adsorbed and Peroxidase labeled	1 Vial x 1.0 mg
5220-0341	Anti-Mouse IgG (H+L) Antibody, Human Serum Adsorbed and Peroxidase Labeled	1 Vial x 1.0 mg
5220-0342	Anti-Mouse IgA+IgG+IgM (H+L) Antibody, Human Serum Adsorbed and Peroxidase labeled	1 Vial x 1.0 mg

## SECONDARY ANTIBODIES AND CONJUGATES

MATERIAL #	PRODUCT DESCRIPTION	PACKAGING
5220-0343	Anti-Mouse IgG+IgM (H+L) Antibody, Human Serum Adsorbed and Peroxidase labeled	1 Vial x 1.0 mg
5220-0310	Anti-Mouse IgG (H+L) Antibody, Human Serum Adsorbed and Phosphatase labeled	1 Vial x 0.1 mg
5220-0367	Anti-Mouse IgA (alpha) Antibody, Human Serum Adsorbed and Peroxidase labeled	1 Vial x 0.5 mg
5220-0394	Anti-Mouse IgG (gamma) Antibody, F(ab') <sub>2</sub> fragment, Human Serum Adsorbed and Peroxidase labeled	1 Vial x 0.5 mg
5220-0395	Anti-Mouse IgG (H+L) Antibody, F(ab') <sub>2</sub> fragment, Human Serum Adsorbed and Peroxidase labeled	1 Vial x 0.5 mg
5220-0399	Anti-Mouse IgG (H+L) Antibody, F(ab') <sub>2</sub> fragment, Human Serum Adsorbed and Phosphatase labeled	1 Vial x 0.5 mg
5220-0460	Anti-Mouse IgG (gamma) Antibody, Human Serum Adsorbed and Peroxidase labeled	1 Vial x 1.0 mL
5230-0307	Anti-Mouse IgG (H+L) Antibody, Human Serum Adsorbed and FITC labeled	1 Vial x 0.5 mg
5230-0308	Anti-Mouse IgA+IgG+IgM (H+L) Antibody, Human Serum Adsorbed and FITC labeled	1 Vial x 0.5 mg
5230-0309	Anti-Mouse IgG+IgM (H+L) Antibody, Human Serum Adsorbed and FITC labeled	1 Vial x 0.5 mg
5230-0311	Anti-Mouse IgG (H+L) antibody, Rabbit+Human Serum Adsorbed and FITC labeled	1 Vial x 0.5 mg
5230-0336	Anti-Mouse IgG (H+L) Antibody, Human Serum Adsorbed and TRITC labeled	1 Vial x 0.5 mg
5210-0212	Anti-PE Antibody	1 Vial x 1.0 mg
5220-0300	Anti-PE, HRP-labeled Antibody	1 Vial x 0.1 mg
5220-0324	Anti-PE, ReserveAP-labeled Antibody	1 Vial x 0.1 mg
5220-0302	Anti-PerCP, HRP-labeled Antibody	1 Vial x 0.1 mg
5210-0214	Anti-PerCP, HRP-labeled Antibody	1 Vial x 1.0 mg
5220-0326	Anti-PerCP, ReserveAP-labeled Antibody	1 Vial x 0.1 mg
5210-0210	Anti-APC Antibody	1 Vial x 0.1 mg
5220-0301	Anti-APC, HRP-labeled Antibody	1 Vial x 0.1 mg
5220-0325	Anti-APC, ReserveAP-labeled Antibody	1 Vial x 0.1 mg
5210-0211	Anti-FITC Antibody	1 Vial x 0.1 mg
5220-0299	Anti-FITC, HRP-labeled Antibody	1 Vial x 0.1 mg
5220-0323	Anti-FITC, Reserve-labeled Antibody	1 Vial x 0.1 mg
5210-0210	Anti-Peromyscus leucopus (White-footed Mouse) IgG (H+L) Antibody	1 Vial x 1.0 mg
5220-0375	Anti-Peromyscus leucopus (white-footed mouse) IgG (H+L) Antibody, Peroxidase labeled	1 Vial x 0.5 mg
5210-0174	Anti-Rabbit IgG (H+L) Antibody	1 Vial x 1.0 mg
5210-0176	Anti-Rabbit IgG (H+L) Antibody, Human Serum Adsorbed	1 Vial x 1.0 mg
5230-0436	Anti-Rabbit IgG (H+L) Antibody, F(ab') <sub>2</sub> Fragment, Human Serum Adsorbed, DyLight 594-Labeled	1 Vial x 1.0 mg
5210-0300	Anti-Rabbit IgG (H+L) Antibody, F(ab') <sub>2</sub> fragment, Human Serum Adsorbed	1 Vial x 1.0 mg
5220-0283	Anti-Rabbit IgG (H+L), DyLight 549 labeled	1 Vial x 0.1 mg
5220-0308	Anti-Rabbit IgG (H+L) Antibody, Phosphatase labeled	1 Vial x 0.1 mg
5220-0335	Anti-Rabbit IgG (H+L), Extra Serum Adsorbed, Peroxidase-labeled	1 Vial x 1.0 mg
5220-0336	Anti-Rabbit IgG (H+L) Antibody, Peroxidase labeled	1 Vial x 1.0 mg
5220-0337	Anti-Rabbit IgG (H+L) Antibody, Human Serum Adsorbed and Peroxidase labeled	1 Vial x 1.0 mg
5220-0393	Anti-Rabbit IgG (H+L) Antibody, F(ab') <sub>2</sub> fragment, Human Serum Adsorbed and Peroxidase labeled	1 Vial x 0.5 mg
5220-0458	Anti-Rabbit IgG (H+L) Antibody, Human Serum Adsorbed and Peroxidase labeled	1 Vial x 1.0 mL



## SECONDARY ANTIBODIES AND CONJUGATES

MATERIAL #	PRODUCT DESCRIPTION	PACKAGING
5230-0298	Anti-Rabbit IgG (H+L) Antibody, FITC-labeled	1 Vial x 0.5 mg
5230-0299	Anti-Rabbit IgG (H+L) Antibody, Human Serum Adsorbed and FITC labeled	1 Vial x 0.5 mg
5230-0332	Anti-Rabbit IgG (H+L) Antibody, TRITC labeled	1 Vial x 0.5 mg
5210-0180	Anti-Rat IgG(H+L) Antibody, Mouse Serum Adsorbed	1 Vial x 1.0 mg
5210-0177	Anti-Rat IgG (gamma) Antibody	1 Vial x 1.0 mg
5210-0178	Anti-Rat IgM (mu) Antibody	1 Vial x 1.0 mg
5210-0179	Anti-Rat IgG(H+L) Antibody	1 Vial x 1.0 mg
5220-0284	Anti-Rat IgG (gamma) Antibody, Peroxidase labeled	1 Vial x 0.1 mg
5220-0285	Anti-Rat IgM (mu) Antibody, Peroxidase labeled	1 Vial x 0.1 mg
5220-0309	Anti-Rat IgG (gamma) Antibody, Phosphatase labeled	1 Vial x 0.1 mg
5220-0364	Anti-Rat IgG (H+L) Antibody, Peroxidase labeled	1 Vial x 0.5 mg
5220-0365	Anti-Rat IgG (H+L) Antibody, Mouse Serum Adsorbed and Peroxidase labeled	1 Vial x 0.5 mg
5220-0377	Anti-Rat IgG (H+L) Antibody, Phosphatase labeled	1 Vial x 0.5 mg
5220-0459	Anti-Rat IgG (H+L) Antibody, Mouse Serum Adsorbed and Peroxidase labeled	1 Vial x 1.0 mL
5230-0301	Anti-Rat IgG (H+L) Antibody, FITC labeled	1 Vial x 0.5 mg
5210-0203	Anti-Sheep IgG (gamma) Antibody	1 Vial x 1.0 mg
5210-0204	Anti-Sheep IgG (H+L) Antibody	1 Vial x 1.0 mg
5220-0318	Anti-Sheep IgG (gamma) Antibody, Phosphatase labeled	1 Vial x 0.1 mg
5220-0372	Anti-Sheep IgG (H+L) Antibody, Peroxidase labeled	1 Vial x 0.5 mg
5230-0322	Anti-Sheep IgG (gamma) Antibody, FITC labeled	1 Vial x 0.5 mg
5230-0324	Anti-Sheep IgG (H+L) Antibody, FITC labeled	1 Vial x 0.5 mg
5210-0171	Anti-Swine IgG (gamma) Antibody	1 Vial x 1.0 mg
5210-0172	Anti-Swine IgM (mu) Antibody	1 Vial x 1.0 mg
5210-0173	Anti-Swine IgG (H+L) Antibody	1 Vial x 1.0 mg
5220-0281	Anti-Swine IgG (gamma) Antibody, Peroxidase labeled	1 Vial x 0.1 mg
5220-0282	Anti-Swine IgM (mu chain) Antibody, Peroxidase labeled	1 Vial x 0.1 mg
5220-0306	Anti-Swine IgG (gamma) Antibody, Phosphatase labeled	1 Vial x 0.1 mg
5220-0307	Anti-Swine IgM (mu) Antibody, Phosphatase labeled	1 Vial x 0.1 mg
5220-0363	Anti-Swine IgG (H+L) Antibody, Peroxidase labeled	1 Vial x 0.5 mg
5230-0295	Anti-Swine IgG (gamma) Antibody, FITC labeled	1 Vial x 0.5 mg
5230-0297	Anti-Swine IgG (H+L) Antibody, FITC labeled	1 Vial x 0.5 mg
5220-0374	Anti-Turkey IgG (H+L) Antibody, Peroxidase labeled	1 Vial x 0.5 mg
5230-0327	Anti-Turkey IgG (H+L) Antibody, FITC labeled	1 Vial x 0.5 mg
5210-0301	Goat anti-Rat IgG (H+L), F(ab') <sub>2</sub> Fragment, Mouse Serum Adsorbed	1 Vial x 1.0 mg
5220-0383	ReserveAP Anti-Bovine IgG (H+L) Antibody, Phosphatase labeled	1 Vial x 0.5 mg
5220-0322	ReserveAP Anti-Dog IgG (gamma) Antibody, Phosphatase labeled	1 Vial x 0.1 mg
5220-0387	ReserveAP Anti-Dog IgG (H+L) Antibody, Phosphatase labeled	1 Vial x 0.5 mg

## SECONDARY ANTIBODIES AND CONJUGATES

MATERIAL #	PRODUCT DESCRIPTION	PACKAGING
5220-0347	Reserve AP Anti-Human IgA (alpha) Antibody, Phosphatase labeled	1 Vial x 1.0 mg
5220-0348	ReserveAP Anti-Human IgG (gamma) Antibody, Phosphatase labeled	1 Vial x 1.0 mg
5220-0349	ReserveAP Anti-Human IgM (mu) Antibody, Phosphatase labeled	1 Vial x 1.0 mg
5220-0350	ReserveAP Anti-Human IgE (epsilon) Antibody, Phosphatase labeled	1 Vial x 1.0 mg
5220-0351	ReserveAP Anti-Human IgG (H+L) Antibody, Phosphatase labeled	1 Vial x 1.0 mg
5220-0352	ReserveAP Anti-Human IgA+IgG+IgM (H+L) Antibody, Phosphatase labeled	1 Vial x 1.0 mg
5220-0400	ReserveAP Anti-Human IgG (gamma) Antibody, F(ab') <sub>2</sub> Fragment, Phosphatase labeled	1 Vial x 0.5 mg
5220-0357	ReserveAP Anti-Mouse IgG (H+L) Antibody, Human Serum Adsorbed and Phosphatase labeled	1 Vial x 1.0 mg
5220-0358	ReserveAP Anti-Mouse IgA+IgM+IgG (H+L) Antibody, Human Serum Adsorbed and Phosphatase labeled	1 Vial x 1.0 mg
5220-0386	ReserveAP Anti-Mouse IgA (alpha) Antibody, Human Serum Adsorbed and Phosphatase labeled	1 Vial x 0.5 mg
5220-0353	ReserveAP Anti-Rabbit IgG (H+L), Phosphatase-labeled	1 Vial x 1.0 mg
5220-0354	ReserveAP Anti-Rabbit IgG (H+L) Antibody, Human Serum Adsorbed and Phosphatase labeled	1 Vial x 1.0 mg
5220-0355	ReserveAP Goat Anti-Mouse IgG (gamma) Antibody, Human Serum Adsorbed and Phosphatase labeled	1 Vial x 1.0 mg
5220-0356	ReserveAP Goat Anti-Mouse IgM (mu) Antibody, Human Serum Adsorbed and Phosphatase labeled	1 Vial x 1.0 mg
5220-0359	ReserveAP Goat Anti-Mouse IgG+IgM (H+L), Human Serum Adsorbed and Phosphatase labeled	1 Vial x 1.0 mg
5220-0385	ReserveAP Goat Anti-Swine IgG (H+L) Antibody, Phosphatase labeled	1 Vial x 0.5 mg
5220-0389	ReserveAP Goat-Anti-Chicken IgG (H+L) Antibody, Phosphatase labeled	1 Vial x 0.5 mg
5220-0384	ReserveAP Rabbit Anti-Goat IgG (H+L) Antibody, Phosphatase labeled	1 Vial x 0.5 mg
5220-0388	ReserveAP Rabbit-Anti-Sheep IgG (H+L) Antibody, Phosphatase labeled	1 Vial x 0.5 mg
5220-0462	ReserveAP Anti-Human IgG (gamma) Antibody, Phosphatase labeled	1 Vial x 1.0 mL
5220-0463	ReserveAP Anti-Human IgM (mu) Antibody, Phosphatase labeled	1 Vial x 1.0 mL
5220-0464	ReserveAP Anti-Human IgG (H+L) Antibody, Phosphatase labeled	1 Vial x 1.0 mL
5220-0465	ReserveAP Anti-Rabbit IgG (H+L) Antibody, Phosphatase labeled	1 Vial x 1.0 mL
5220-0467	ReserveAP Anti-Mouse IgG (gamma) Antibody, Human Serum Adsorbed and Phosphatase labeled	1 Vial x 1.0 mL
5220-0468	ReserveAP Anti-Mouse IgG (H+L) Antibody, Human Serum Adsorbed and Phosphatase labeled	1 Vial x 1.0 mL
5230-0341	Anti-Mouse IgG (H+L) HSA, DyLight 488 labeled	1 Vial x 0.1 mg
5230-0395	Rabbit Anti-Goat IgG (H+L), DyLight 549 labeled	1 Vial x 1.0 mg
5230-0397	Anti-Guinea Pig IgG (H+L), DyLight 549 labeled	1 Vial x 1.0 mg
5230-0401	Rabbit Anti-Goat IgG (H+L), DyLight 680 labeled	1 Vial x 1.0 mg
5230-0402	Anti-Rabbit IgG (H+L), DyLight 680 labeled	1 Vial x 1.0 mg
5230-0403	Anti-Rabbit IgG (H+L) HSA, DyLight 680 labeled	1 Vial x 1.0 mg
5230-0404	Anti-Rat IgG (H+L), DyLight 680 labeled	1 Vial x 1.0 mg
5230-0405	Anti-Guinea Pig IgG (H+L), DyLight 680 labeled	1 Vial x 1.0 mg
5230-0406	Anti-Mouse IgG (H+L) HSA, DyLight 680 labeled	1 Vial x 1.0 mg
5230-0410	Anti-Human IgG (H+L), DyLight 800 labeled	1 Vial x 1.0 mg
5230-0411	Rabbit Anti-Goat IgG (H+L), DyLight 800 labeled	1 Vial x 1.0 mg
5230-0412	Anti-Rabbit IgG (H+L), DyLight 800 labeled	1 Vial x 1.0 mg

## SECONDARY ANTIBODIES AND CONJUGATES

MATERIAL #	PRODUCT DESCRIPTION	PACKAGING
5230-0415	Anti-Mouse IgG (H+L), HSA, DyLight 800 labeled	1 Vial x 1.0 mg
5230-0416	Anti-Mouse IgG (H+L), RbSA, HSA, DyLight 800 labeled	1 Vial x 1.0 mg
5230-0420	Anti-Mouse IgG (H+L) HSA DyLight 405-labeled	1 Vial x 1.0 mg
5230-0421	Anti-Chicken IgG (H+L) Antibody DyLight 405 labeled	1 Vial x 1.0 mg
5230-0425	Anti-Human IgG (H+L) antibody, FITC labeled	1 Vial x 2.0 mg
5230-0426	Anti-Rabbit IgG (H+L) antibody, FITC labeled	1 Vial x 2.0 mg
5230-0427	Anti-Mouse IgG (H+L), Human Serum Adsorbed and FITC labeled	1 Vial x 2.0 mg
5230-0429	Anti-Human IgG, (H+L) F(ab') <sub>2</sub> fragment, Cy5 labeled	1 Vial x 1.0 mg
5230-0430	Anti-Rabbit IgG (H+L) Antibody, F(ab') <sub>2</sub> fragment, Human Serum Adsorbed and DyLight 488 Labeled	1 Vial x 1.0 mg
5230-0431	Anti-Mouse IgG (gamma) antibody, F(ab') <sub>2</sub> fragment, Human Serum Adsorbed and DyLight 488 labeled	1 Vial x 1.0 mg
5230-0432	Anti-Rabbit IgG (H+L), HSA, F(ab') <sub>2</sub> fragment, DyLight 680 labeled	1 Vial x 1.0 mg
5230-0440	Anti-Mouse IgG (H+L) HSA F(ab') <sub>2</sub> fragment, DyLight 633 labeled	1 Vial x 1.0 mg
5230-0441	Anti-Human IgG (gamma) Antibody, F(ab') <sub>2</sub> fragment, FITC labeled	1 Vial x 1.0 mg
5230-0442	Anti-Human IgM (mu) Antibody, F(ab') <sub>2</sub> fragment, FITC labeled	1 Vial x 1.0 mg
5230-0443	Anti-Human IgG (H+L) Antibody, F(ab') <sub>2</sub> fragment, FITC labeled	1 Vial x 1.0 mg
5230-0444	Anti-Rabbit IgG (H+L) antibody, F(ab') <sub>2</sub> fragment, Human Serum Adsorbed and FITC labeled	1 Vial x 1.0 mg
5230-0446	Anti-Mouse IgG (H+L) antibody, F(ab') <sub>2</sub> fragment, Human Serum Adsorbed and FITC labeled	1 Vial x 1.0 mg
5260-0027	Biotinylated Anti-Human IgA (alpha chain) Antibody	1 Vial x 0.5 mg
5260-0028	Biotinylated Anti-Human IgG (gamma) Antibody	1 Vial x 0.5 mg
5260-0029	Biotinylated Anti-Human IgM (mu) Antibody	1 Vial x 0.5 mg
5260-0030	Biotinylated Anti-Human IgE (epsilon) Antibody	1 Vial x 0.5 mg
5260-0031	Biotinylated Anti-Human IgG (H+L) Antibody	1 Vial x 0.5 mg
5260-0033	Biotinylated Anti-Bovine IgM (mu) Antibody	1 Vial x 0.5 mg
5260-0035	Biotinylated Anti-Goat IgG (H+L) Antibody	1 Vial x 0.5 mg
5260-0036	Biotinylated Anti-Swine IgG (gamma) Antibody	1 Vial x 0.5 mg
5260-0038	Biotinylated Anti-Rabbit IgG (H+L) Antibody	1 Vial x 0.5 mg
5260-0041	Biotinylated Anti-Rat IgM (mu) Antibody	1 Vial x 0.5 mg
5260-0046	Biotinylated Anti-Mouse IgG (gamma) Antibody, Human Serum Adsorbed	1 Vial x 0.5 mg
5260-0048	Biotinylated Anti-Mouse IgG (H+L) Antibody, Human Serum Adsorbed	1 Vial x 0.5 mg
5260-0050	Biotinylated Anti-Mouse IgG and IgM (H+L) Antibody, Human Serum Adsorbed	1 Vial x 0.5 mg
5260-0051	Biotinylated Anti-Mouse IgG (H+L) Antibody, Rat and Human Serum Adsorbed	1 Vial x 0.5 mg
5260-0052	Biotinylated Anti-Mouse IgG (H+L) Antibody, Rabbit and Human Serum Adsorbed	1 Vial x 0.5 mg
5260-0053	Biotinylated Anti-Dog IgG (H+L) Antibody	1 Vial x 0.5 mg
5260-0054	Biotinylated Anti-Cat IgG (H+L) Antibody	1 Vial x 0.5 mg
5260-0055	Biotinylated Anti-Horse IgG (gamma) Antibody	1 Vial x 0.5 mg
5260-0056	Biotinylated Anti-Horse IgM (mu) Antibody	1 Vial x 0.5 mg
5260-0057	Biotinylated Anti-Sheep IgG (H+L) Antibody	1 Vial x 0.5 mg

## SECONDARY ANTIBODIES AND CONJUGATES

MATERIAL #	PRODUCT DESCRIPTION	PACKAGING
5260-0058	Biotinylated Anti-Chicken IgG (H+L) Antibody	1 Vial x 0.5 mg
5260-0059	Biotinylated Anti-Human IgG (H+L) Antibody	1 Vial x 2.0 mg
5260-0060	Biotinylated Anti-Rabbit IgG (H+L) Antibody	1 Vial x 2.0 mg
5260-0061	Biotinylated Anti-Mouse IgG (H+L) Antibody, Human Serum Adsorbed	1 Vial x 2.0 mg
5260-0062	Biotinylated Anti-Human IgG (gamma) Antibody, F(ab') <sub>2</sub> fragment	1 Vial x 1.0 mg
5260-0063	Biotinylated Anti-Human IgG (H+L) antibody, F(ab') <sub>2</sub> Fragment	1 Vial x 1.0 mg
5450-0009	Anti-Human IgG (H+L) Antibody, Peroxidase labeled	1 Vial x 1.0 mL
5450-0010	Anti-Rabbit IgG (H+L) Antibody, Peroxidase labeled	1 Vial x 1.0 mL
5450-0011	Anti-Mouse IgG (H+L) Antibody, Human Serum Adsorbed and Peroxidase labeled	1 Vial x 1.0 mL

## BACTRACE PRIMARY ANTIBODIES AND CONJUGATES

MATERIAL #	PRODUCT DESCRIPTION	PACKAGING
5320-0028	BacTrace Anti-Vibrio Species, Peroxidase-labeled	1 Vial x 0.1 mg
5320-0030	BacTrace Anti-Yersinia Species Antibody, Peroxidase labeled	1 Vial x 0.1 mg
5320-0033	BacTrace Anti-Campylobacter Species Antibody, Peroxidase-labeled	1 Vial x 0.1 mg
5320-0034	BacTrace Anti-Helicobacter pylori Antibody	1 Vial x 0.1 mg
5320-0035	BacTrace Anti-Escherichia coli O157:H7 Antibody, Peroxidase-labeled	1 Vial x 0.1 mg
5320-0036	BacTrace Anti-Escherichia coli O111 Antibody, Peroxidase-labeled	1 Vial x 0.1 mg
5320-0037	BacTrace Anti-Escherichia coli O26 Antibody, Peroxidase-labeled	1 Vial x 0.1 mg
5320-0041	BacTrace Anti-Escherichia coli O45 Antibody, Peroxidase-labeled	1 Vial x 0.1 mg
5320-0042	BacTrace Anti-Renibacterium salmoninarum Antibody, Peroxidase labeled	1 Vial x 0.1 mg
5320-0044	BacTrace Anti-Salmonella, CSA-1 Antibody, Phosphatase-labeled	1 Vial x 0.1 mg
5320-0047	BacTrace Anti-Listeria, Genus Specific Antibody, ReserveAP-labeled	1 Vial x 0.1 mg
5330-0059	BacTrace Anti-Salmonella, CSA-1 Antibody, FITC-labeled	1 Vial x 0.5 mg
5330-0060	BacTrace Anti-Campylobacter Species Antibody, FITC-labeled	1 Vial x 0.5 mg
5330-0062	BacTrace Anti-Escherichia coli O157 Latex Beads	1 Vial x 0.5 mg
5330-0063	BacTrace Anti-Renibacterium salmoninarum Antibody, FITC labeled	1 Vial x 0.5 mg
5330-0064	BacTrace Anti-Borrelia burgdorferi Antibody, FITC labeled	1 Vial x 0.5 mg
5330-0065	BacTrace Anti-Borrelia Species Antibody, FITC labeled	1 Vial x 0.5 mg
5330-0066	BacTrace Anti-Shigella Species Antibody, DyLight 488-labeled	1 Vial x 0.5 mg
5330-0067	BacTrace Anti-Vibrio Species, DyLight 488-labeled	1 Vial x 0.5 mg
5330-0068	BacTrace Anti-Legionella Species Antibody, DyLight 488 labeled	1 Vial x 0.5 mg



## BACTRACE PRIMARY ANTIBODIES AND CONJUGATES

MATERIAL #	PRODUCT DESCRIPTION	PACKAGING
5330-0069	BacTrace Anti-Yersinia Species Antibody, DyLight 488 labeled	1 Vial x 0.5 mg
5330-0070	BacTrace Anti-Escherichia coli O111, DyLight 488-labeled	1 Vial x 0.5 mg
5330-0071	BacTrace Anti-Escherichia coli O26 Antibody, DyLight 488-labeled	1 Vial x 0.5 mg
5330-0072	BacTrace Anti-Escherichia coli O103 Antibody, DyLight 488-labeled	1 Vial x 0.5 mg
5330-0073	BacTrace Anti-Escherichia coli O145 Antibody, DyLight 488-labeled	1 Vial x 0.5 mg
5330-0074	BacTrace Anti-Escherichia coli O121 Antibody, DyLight 488-labeled	1 Vial x 0.5 mg
5330-0075	BacTrace Anti-Escherichia coli O45 Antibody, DyLight 488-labeled	1 Vial x 0.5 mg
5350-0036	BacTrace Anti-Salmonella CSA-1 Magnetic Beads	1 Vial x 1.0 mL
5350-0037	BacTrace Anti-E. coli O157 Magnetic Beads	1 Vial x 1.0 mL
5350-0053	BacTrace Anti-E coli O91 Magnetic Beads	1 Vial x 1.0 mL
5350-0054	BacTrace Anti-E coli O104 Magnetic Beads	1 Vial x 1.0 mL
5350-0055	BacTrace Anti-Listeria Magnetic Beads	1 Vial x 1.0 mL
5360-0028	BacTrace Anti-Legionella Species Antibody, Biotin labeled	1 Vial x 0.5 mg
5360-0029	BacTrace Anti-Yersinia Species Antibody, Biotin labeled	1 Vial x 0.5 mg
5360-0031	BacTrace Anti-Salmonella CSA-1 Antibody, Biotin-labeled	1 Vial x 0.5 mg
5360-0032	BacTrace Anti-Escherichia coli O157:H7 Antibody, Biotin-labeled	1 Vial x 0.5 mg
5360-0033	BacTrace Anti-Escherichia coli O111 Antibody, Biotin-labeled	1 Vial x 0.5 mg
5360-0034	BacTrace Anti-Escherichia coli O26 Antibody, Biotin-labeled	1 Vial x 0.5 mg
5360-0035	BacTrace Anti-Escherichia coli O103 Antibody, Biotin-labeled	1 Vial x 0.5 mg
5360-0036	BacTrace Anti-Escherichia coli O145 Antibody, Biotin-labeled	1 Vial x 0.5 mg
5360-0037	BacTrace Anti-Escherichia coli O121 Antibody, Biotin-labeled	1 Vial x 0.5 mg
5360-0038	BacTrace Anti-Escherichia coli O45 Antibody, Biotin-labeled	1 Vial x 0.5 mg

## WESTERN BLOTTING REAGENTS

MATERIAL #	PRODUCT DESCRIPTION	PACKAGING
5410-0008	Protein Detector TMB Western Blotting Kit	2500 cm <sup>2</sup>
5410-0009	Protein Detector LumiGLO Western Blotting Kit	2500 cm <sup>2</sup>
5410-0013	Protein Detector BCIP/NBT Western Blotting Kit	2500 cm <sup>2</sup>
5420-0020	4 CN Peroxidase Substrate System	6 Vials x 100 mL
5420-0024	4 CN Peroxidase Substrate System (2-C)	6 Bottles x 450 mL
5420-0025	TMB Membrane Peroxidase Substrate System	1 Bottle x 440 mL
5420-0026	TMB Membrane Enhancer	1 Bottle x 40 mL
5420-0027	TMB Membrane Peroxidase Substrate	2 Bottles x 100 mL
5420-0028	TMB Membrane Peroxidase Substrate	1 Bottle x 1.0 L
5420-0029	TMB Membrane Peroxidase Substrate	1 Bottle x 100 mL
5420-0030	BCIP/NBT Phosphatase Substrate System (3-Component)	1 Bottle x 300 mL
5420-0033	BCIP/NBT Phosphatase Substrate	6 Vials x 100 mL
5420-0036	BCIP/NBT Phosphatase Substrate	1 Bottle x 1.0 L
5420-0037	BCIP/NBT Phosphatase Substrate	1 Bottle x 5 L
5420-0038	BCIP/NBT Phosphatase Substrate (1-Component)	1 Bottle x 100 mL
5430-0040	LumiGLO Chemiluminescent Substrate	1 X 120 mL LumiGLO Chemiluminescent Substrate A & 1 x 120 mL LumiGLO Chemiluminescent Substrate B
5430-0041	LumiGLO Chemiluminescent Substrate	3 X 120 mL LumiGLO Chemiluminescent Substrate A & 3 x 120 mL LumiGLO Chemiluminescent Substrate B
5430-0042	LumiGLO Chemiluminescent Substrate	1 x 30 mL LumiGLO Chemiluminescent Substrate A & 1 x 30 mL LumiGLO Chemiluminescent Substrate B
5430-0049	LumiGLO Reserve™ Chemiluminescent Substrate	2 x 200mL Wash Buffer, 1 x 40mL Solution A, & 1 x 80mL Solution B
5430-0050	LumiGLO Reserve Chemiluminescent Substrate	1 x 100mL Wash Solution, 1 x 10mL Solution A, 1 x 20mL Solution B
5430-0051	LumiGLO Reserve Chemiluminescent Substrate	1 x 100mL 20X Wash Solution, 1 x 17 mL LumiGLO Reserve Chemiluminescent Substrate A, 1 x 34 mL LumiGLO Reserve Chemiluminescent Substrate B
5430-0052	PhosphaGLO™ Reserve AP Substrate	1 Bottle x 30 mL
5430-0053	PhosphaGLO Reserve AP Substrate	1 Bottle x 100 mL
5430-0054	PhosphaGLO AP Substrate	1 Bottle x 30 mL
5430-0055	PhosphaGLO AP Substrate	1 Bottle x 100 mL
5450-0012	Silver Enhancer Kit for Membranes	1 x 250 mL Silver Enhancer MB Solution A, 1x 250 mL, Silver Enhancer MB Solution B

ELISA REAGENTS		
MATERIAL #	PRODUCT DESCRIPTION	PACKAGING
5110-0009	Protein Detector HRP Microwell Kit, Anti-Human	2000 Tests
5110-0010	Protein Detector HRP Microwell Kit, Anti-Rabbit	2000 Tests
5110-0011	Protein Detector HRP Microwell Kit, Anti-Mouse	2000 Tests
5110-0012	Protein Detector AP Microwell Kit, Anti-Human	20 Plates
5120-0032	ABTS® ELISA HRP Substrate	6 Vials x 100 mL
5120-0033	ABTS® Peroxidase Substrate System	6 Vials X 450 mL
5120-0041	ABTS® ELISA HRP Substrate	6 Vials x 100 mL
5120-0043	ABTS® ELISA HRP Substrate	1 Bottle x 1.0 L
5120-0046	ABTS® ELISA HRP Substrate	1 Bottle x 100 mL
5120-0047	TMB Microwell Peroxidase Substrate System	6 Vials x 100 mL
5120-0050	TMB Microwell Peroxidase Substrate System	6 Bottles x 450 mL
5120-0053	TMB Microwell Peroxidase Substrate System	2 Bottles x 100 mL
5120-0059	BluePhos® Microwell Phosphatase Substrate System	6 Vials x 100 mL
5120-0060	BluePhos® Microwell Phosphatase Substrate System	6 Bottles x 450 mL
5120-0061	BluePhos® Microwell Phosphatase Substrate System	2 Bottles x 25 mL
5120-0075	SureBlue™ TMB Microwell Peroxidase Substrate	1 Bottle x 100 mL
5120-0076	SureBlue™ TMB Microwell Peroxidase Substrate	4 Bottles x 100 mL
5120-0077	SureBlue™ TMB Microwell Peroxidase Substrate	1 Bottle x 1.0 L
5120-0078	SureBlue™ TMB Microwell Peroxidase Substrate	1 Bottle x 5 L
5120-0081	SureBlue Reserve™ TMB Microwell Peroxidase Substrate	1 Bottle x 100 mL
5120-0082	SureBlue Reserve™ TMB Microwell Peroxidase Substrate	4 Bottles x 100 mL
5120-0083	SureBlue Reserve™ TMB Microwell Peroxidase Substrate	1 Bottle x 1.0 L
5150-0014	Coating Solution Concentrate	2 Bottles x 25 mL
5150-0017	ABTS Peroxidase Stop Solution	2 Bottles x 100 mL
5150-0020	TMB Stop Solution	4 Bottles x 100 mL
5150-0021	TMB Stop Solution	1 Bottle x 1.0 L
5150-0022	TMB BlueSTOP™ Solution	4 Bottles x 100 mL
5150-0024	TMB BlueSTOP™ Solution	1 Bottle x 1.0 L
5150-0026	APStop™ Solution (10X)	2 Bottles x 100 mL

## IMMUNOHISTOCHEMISTRY

MATERIAL #	PRODUCT DESCRIPTION	PACKAGING
5510-0030	TrueBlue Peroxidase Substrate	2 Bottles x 100 mL
5510-0031	DAB Reagent Set	500 Slides
5510-0033	HistoMark ORANGE	1,000 Slides
5510-0034	HistoMark BLACK	1,000 Slides
5510-0035	HistoMark TrueBlue	500 Slides
5510-0049	TrueBlue Substrate	1 Bottle x 50 mL
5510-0052	TrueBlue Peroxidase Substrate	1 Bottle x 10 mL
5520-0021	Silver Enhancer Kit for Microscopy	1 X 25 mL Silver Enhancer Solution A, 1 x 25 mL Silver Enhancer Solution B
5520-0023	HistoMark Biotin-Streptavidin Peroxidase Kit, Mouse Primary Antibody	500 Slides
5520-0024	HistoMark Biotin Streptavidin-HRP Systems, Anti-Rabbit Antibody	500 Slides
5530-0005	Protein Detector HRP ELISpot Kit	5 MultiScreen Immobilon (PVDF) Plates, 1 x 50 mL TrueBlue Peroxidase Substrate, 1 x 1 mL HRP-labeled streptavidin, 1 x 25 mL Coating Solution Concentrate, 1 x 25 mL 10% BSA Diluent/Blocking Solution Concentrate, 1 x 200 mL WashSolution Concentrate (20X)
5540-0001	Contrast RED Solution	1 Bottle x 50 mL
5540-0002	Contrast BLUE Solution	1 Bottle x 50 mL
5540-0003	Contrast GREEN Solution	1 Bottle x 50 mL
5550-0001	Peroxidase-labeled Streptavidin	1 Bottle x 50 mL
5550-0002	Phosphatase-labeled Streptavidin	1 Bottle x 50 mL
5560-0006	10% Normal Rabbit Serum	1 Bottle x 10 mL
5560-0007	10% Normal Goat Serum	1 Bottle x 50 mL
5560-0008	10% Normal Rabbit Serum	1 Bottle x 50 mL
5560-0009	Universal Block for Immunohistochemistry	1 Bottle x 100 mL
5560-0010	10% Normal Mouse Serum	1 Bottle x 50 mL
5570-0005	Fluorescent Mounting Media	1 Bottle x 15 mL
5930-0006	DAPI	1 Vial x 1.0 mg
5930-0008	Propidium Iodide	1 Vial x 1.0 mg



## Labeled Streptavidin and Labeled Protein A

MATERIAL #	PRODUCT DESCRIPTION	PACKAGING
5220-0376	Protein A, Peroxidase labeled	1 Vial x 0.5 mg
5270-0017	Streptavidin, DyLight 488 labeled	1 Vial x 0.1 mg
5270-0019	Streptavidin, DyLight 800 labeled	1 Vial x 0.1 mg
5270-0020	DyLight 405-labeled Streptavidin	1 Vial x 0.1 mg
5270-0022	Streptavidin, Cy3 labeled	1 Vial x 1.0 mg
5270-0023	Streptavidin, Cy5 labeled	1 Vial x 1.0 mg
5270-0024	Streptavidin, DyLight 488 labeled	1 Vial x 1.0 mg
5270-0027	DyLight 405-labeled Streptavidin	1 Vial x 1.0 mg
5270-0028	Streptavidin, FITC labeled	1 Vial x 1.0 mg
5270-0029	Streptavidin, Peroxidase labeled	1 Vial x 0.5 mg
5270-0030	Streptavidin, Phosphatase labeled	1 Vial x 0.5 mg
5950-0004	Streptavidin, Peroxidase labeled	1 Vial x 1.0 mL
5950-0005	Streptavidin, Phosphatase labeled	1 Vial x 1.0 mL

## Sample Preparation and Protein Purification

MATERIAL #	PRODUCT DESCRIPTION	PACKAGING
5710-0005	Protein A Agarose	1 Bottle x 5 mL
5710-0009	Protein A Agarose Purification Kit	1 Bottle x 5 mL
5720-0002	Protein G Agarose	1 Bottle x 10 mL
5720-0004	Protein G Agarose Purification Kit	2 Bottle x 10 mL

## Recombinant Protein Detection

MATERIAL #	PRODUCT DESCRIPTION	PACKAGING
5810-0024	HisDetector Western Blot Kit, HRP Chemiluminescent	40 Blots
5810-0025	HisDetector Western Blot Kit, AP Colorimetric	40 Blots
5820-0001	HisDetector Nickel-HRP	1 Vial x 0.1 mg/mL

## SUPPORT REAGENTS AND ACCESSORIES

MATERIAL #	PRODUCT DESCRIPTION	PACKAGING
5140-0006	10% BSA Diluent/Blocking Solution	2 Bottles x 100 mL
5140-0008	10% BSA Diluent/Blocking Solution	1 Bottle x 1.0 L
5140-0011	Milk Diluent/Blocking Concentrate	2 Bottles x 100 mL
5150-0008	Wash Solution (20X)	4 Bottles x 200 mL
5150-0011	Wash Solution (20X)	1 Bottle x 1.0 L
5290-0005	HRP Stabilizer	1 Bottle x 200 mL
5290-0007	AP Stabilizer	1 Bottle x 200 mL
5460-0011	10X Tris-Glycine Transfer Buffer	1 Bottle x 1.0 L
5460-0012	10X Tris-Glycine Transfer Buffer	1 Bottle x 5 L
5460-0015	10X Tris-Glycine SDS Buffer	1 Bottle x 1.0 L
5460-0016	10X Tris-Glycine SDS Buffer	1 Bottle x 5 L
5460-0019	10% TWEEN 20	1 Bottle x 200 mL
5460-0020	10% TWEEN 20	1 Bottle x 1.0 L
5460-0022	10X Phosphate-buffered Saline (PBS)	1 Bottle x 1.0 L
5460-0023	10X Phosphate-buffered Saline	1 Bottle x 5 L
5460-0026	10X Phosphate-buffered Saline with TWEEN 20	1 Bottle x 200 mL
5460-0027	10X Phosphate-buffered Saline with TWEEN 20	1 Bottle x 1.0 L
5460-0030	10X Dulbecco's Phosphate-buffered Saline	1 Bottle x 1.0 L
5460-0031	10X Dulbecco's PBS (D-PBS)	1 Bottle x 5 L
5460-0033	10X Dulbecco's Phosphate-buffered Saline with TWEEN 20	1 Bottle x 200 mL
5460-0034	10X Dulbecco's Phosphate-buffered Saline with TWEEN 20	1 Bottle x 1.0 L
5460-0036	10X Tris-buffered Saline	1 Bottle x 1.0 L
5460-0037	10X Tris-buffered Saline	1 Bottle x 5 L
5460-0040	10X Tris-buffered Saline with 0.5% TWEEN 20	1 Bottle x 200 mL
5460-0041	10X Tris-buffered Saline with 0.5% TWEEN 20	1 Bottle x 1.0 L
5460-0043	10X Tris-buffered Saline with 10% TWEEN 20	1 Bottle x 200 mL
5460-0044	10X Tris-buffered Saline with 10% TWEEN 20	1 Bottle x 1.0 L
5460-0046	5% SDS Solution	2 Bottles x 100 mL
5640-0001	Spin-Pure Filters	5 included with each package
5920-0004	5X Detector Block	2 Bottles x 10g powder
5960-0021	20X SSC	1 Bottle x 1.0 L
5960-0026	Hybridization Bags	50 Bags

## NUCLEIC ACID LABELING AND DETECTION

MATERIAL #	PRODUCT DESCRIPTION	PACKAGING
5960-0017	Phosphatase Assay Buffer (10X)	1 Bottle x 200 mL
5960-0018	Phosphatase Wash Solution (5X)	1 Bottle x 600 mL
5960-0029	GeneRuler Biotinylated DNA Ladder	20 - 50 lanes


## PROTEIN LABELING


MATERIAL #	PRODUCT DESCRIPTION
CNJ93100-0.20	HRP-IgG Conjugation Kit, 0.3 mg
CNJ93100-001	HRP-IgG Conjugation Kit, 1MG
CNJ93100-005	HRP-IgG Conjugation Kit, 5MG
CNJ93100-010	HRP-IgG Conjugation Kit, 10MG
CNJ93101-0.20	RPE-IgG Conjugation Kit, 0.3 mg
CNJ93101-001	RPE-IgG Conjugation Kit, 1MG
CNJ93101-005	RPE-IgG Conjugation Kit, 5MG
CNJ93102-0.2	Biotin Labeling Kit, 4 X 0.05MG
CNJ93102-0.3	Biotin Labeling Kit, 3 X 0.01MG
CNJ93102-01	Biotin Labeling Kit, 1MG
CNJ93102-1.1	Biotin Labeling Kit, 10 X 0.1MG
CNJ93102-10	Biotin Labeling Kit, 10MG
CNJ93103-0.2	AP-IgG Conjugation Kit, 0.2 MG
CNJ93103-001	AP-IgG Conjugation Kit, 1MG
CNJ93103-005	AP-IgG Conjugation Kit, 5MG
CNJ93103-010	AP-IgG Conjugation Kit, 10MG
CNJ93104-0.3	FITC-IgG Conjugation Kit, 3 X 0.1 MG
CNJ93104-001	FITC-IgG Conjugation Kit, 1MG
CNJ93104-010	FITC-IgG Conjugation Kit, 10MG



**CLINICAL  
DIAGNOSTICS**

 37 Birch Street, Milford, MA 01757

 +1-508-244-6400

 +1-508-634-3334

 [seracare.com](http://seracare.com)

